

**ELEVATOR NOTES:**

VERIFY ALL ELECTRICAL REQUIREMENTS WITH MANUFACTURER PRIOR TO BID/PURCHASE/INSTALLATION.

- PROVIDE/LOCATE CAB LIGHTS, RECEPTACLE(S), AND DATA OUTLET(S) AS RECOMMENDED BY MFG. AND WITH PROPER GFI PROTECTION
- PROVIDE FUSES/DISCONNECTS WITH ALL LOCKING/GLASS/CURRENT LIMITING/TIME DELAY RATINGS/ETC. RECOMMENDED BY ELEVATOR MFG.
- PROVIDE GROUNDING AS REQUIRED BY ELEVATOR MFG.
- SEE MFG'S ELECTRICAL INSTALLATION INSTRUCTIONS FOR ALL GUIDELINES PRIOR TO ROUGH-IN.
- COORDINATE ELEVATOR EQUIPMENT LAYOUT WITH MFG. PRIOR TO ROUGH-IN. EQUIPMENT SHOWN IS DIAGRAMMATIC ONLY. ACTUAL LOCATIONS BY ELEVATOR MFG.

ALL INSTALLATION TO COMPLY WITH NEC.

POWER SYMBOL LEGEND:		
PLEASE NOTE: 1. ALL SYMBOLS MAY NOT BE USED ON THIS PROJECT. SYMBOLS SHOWN ARE TYPICAL. 2. ALL RECEPTACLES, UNLESS OTHERWISE NOTED, SHALL BE MOUNTED AT 18" A.F.F., COORDINATE ALL MOUNTING HEIGHTS WITH ARCHITECT PRIOR TO ROUGH-IN.		
110V DUPLEX RECEPTACLE	ELECTRICAL METER	SWITCH
110V SINGLE RECEPTACLE	FUSE DISCONNECT	THREE-WAY SWITCH
110V SWITCHED RECEPTACLE	ELECTRICAL CIRCUIT BREAKER	MOTOR RATED SWITCH
QUAD-PLEX RECEPTACLE	ELECTRICAL PANEL	TIMER SWITCH
WP WATER PROOF WITH WR TYPE RECEPTACLE	LIGHTING CONTROL TIME CLOCK/PANEL	PUSH BUTTON
GFI GROUND FAULT CIRCUIT INTERRUPTER	THERMOSTAT	AFF ABOVE FINISHED FLOOR
RECEPTACLE MOUNTED ABOVE COUNTER	EXHAUST FAN	ASW ABOVE SHOW WINDOW
SPECIAL PURPOSE OUTLET	RECIRCULATING PUMP	CM CEILING MOUNTED
FLOOR RECEPTACLE WITH BRASS COVER PLATE; FLUSH W/ FLOOR	SMOKE DETECTOR	POS POINT OF SALE STATION
WIRE MOLD W/ USB PORTS	TELEVISION JACK	UC UNDER COUNTER
JUNCTION BOX	TELEPHONE GROUND BAR	WR WEATHER RESISTANT RATED
TELE/FAX/DATA PORT	TELEPHONE BOARD	ACCESS CONTROL/CARD READER - BY OTHERS
STUB-UP CIRCUIT/CONDUIT PER KITCHEN DESIGN PLANS	CAMERA LOCATION, COORDINATE WITH L.V./I.T. CONSULTANTS - BY OTHERS	SPEAKER LOCATION, COORDINATE WITH L.V./I.T. CONSULTANTS - BY OTHERS
		WIRELESS ACCESS POINT - BY OTHERS

- ELECTRICAL PLAN KEY NOTES:**
1. PROVIDE FUSES AS RECOMMENDED BY MANUFACTURER. LOCATE DISCONNECT TO MAINTAIN ALL REQUIRED CLEARANCES ON ALL SIDES.
  2. FUR OUT WALL TO RECESS PANELS AS NEEDED.
  3. PROVIDE WEATHER PROOF J-BOX FOR TENANT SIGNAGE. VERIFY EXACT MOUNTING LOCATION IN FIELD. WIRE THROUGH PHOTOCELL AND/OR TIME CLOCK FOR CONTROL. COORDINATE WITH ARCHITECT/OWNER/ID.
  4. PER KITCHEN CONSULTANT PLANS, EMPTY CONDUIT TO EXPOSED CEILING ABOVE HEX J-BOX RECESSED IN WALL @ 48" AFF. COORDINATE IN FIELD.
  5. PER KITCHEN CONSULTANT PLANS; ELECTRICIAN TO STRAP GLASS WASHER WIRING TO UNDERSIDE OF TABLE. COORDINATE IN FIELD.
  6. PER KITCHEN CONSULTANT PLANS; ELECTRICIAN TO STRAP TABLE LIMIT SWITCH WIRING TO UNDERSIDE OF TABLE. COORDINATE IN FIELD.
  7. ELECTRICIAN SHALL SUPPLY AND INSTALL START-STOP STATION FOR EXHAUST FAN ON DISHWASHER. WIRE VENT FAN CONTROL RELAY TO DISHWASHER. COORDINATE WITH MANUFACTURER AND MECHANICAL.
  8. COORDINATE HOOD CONTROL PANEL AND ALL FANS (CEILING AND ROOFTOP MOUNTED) WITH MFG. VERIFY ALL BREAKER/WIRE/DISCONNECT TYPES, RATINGS, AND REQUIREMENTS WITH MFG. PRIOR TO BID/PURCHASE/INSTALL. \*NOTE: PER MFG. NO GFI OR SHUNT-TRIP BREAKER FOR CONTROL PANEL.
  9. SEE ELEVATOR NOTES ON THIS SHEET.
  10. PROVIDE POWER FOR & COORDINATE AUTOMATIC DOOR SENSOR/MOTOR REQUIREMENTS WITH MFG. FOLLOW ALL MANUFACTURER'S REQUIREMENTS AND RECOMMENDATIONS. NOTIFY ENGINEER IF CHANGES ARE REQUIRED.
  11. PROVIDE WIREMOLD AT BAR COUNTER FOR RECEPTACLE/USB OUTLETS. PROVIDE (3) CIRCUITS AS INDICATED ON PLAN. COORDINATE RECEPTACLE/USB TYPES/QUANTITIES/LOCATIONS WITH INTERIOR DESIGNER/OWNER.
- NOTE: NOT ALL KEY NOTES WILL NOT BE USED ON EVERY SHEET.

SEE PROJECT ELECTRICAL NOTES & KITCHEN/BAR NOTES ON SHEET E0.1.  
SEE DETAILS ON SHEET E0.2. SEE ELECTRICAL EQUIPMENT SCHEDULE ON KITCHEN DESIGN DRAWINGS SHEETS E0.1.3 & FS-E1.4

ELECTRICIAN SHALL VERIFY ALL MOUNTING HEIGHTS OF ALL DEVICES WITH KITCHEN CONSULTANT/MFG PRIOR TO ROUGH-IN.

ALL EXTERIOR DEVICES SHALL BE NEMA RATED/WEATHER PROOFED FOR THEIR INTENDED USE AND LOCATION.

**KITCHEN/BAR RECEPTACLES:**

ALL 110V, 15A AND 20A, KITCHEN/BAR SERVICE RECEPTACLES ARE TO BE GFCI PROTECTED PER NEC 210.8(B)(2). PROVIDE SHUNT-TRIP BREAKERS AND GFCI PROTECTION AT DEVICE FOR ALL RECEPTACLES LOCATED UNDER THE HOOD. (GFCI LABEL NOT SHOWN AT EACH DEVICE ON PLAN).

**EQUIPMENT DISCONNECTS:**

CONTRACTOR TO MAINTAIN A 30" WIDE AND 3'-0" DEEP CLEARANCE AROUND ALL ELECTRICAL DISCONNECTING MEANS FOR ALL EQUIPMENT. CONTRACTOR SHALL ENSURE THERE IS ADEQUATE MAINTENANCE LIGHTING AND A MAINTENANCE RECEPTACLE WITHIN 25' OF THE EQUIPMENT.

LOW VOLTAGE/I.T. DEVICES (SPEAKERS/CAMERAS/WAP) SHOWN FOR REFERENCE ONLY. COORDINATE ALL LOCATIONS AND WIRING REQUIREMENTS WITH LV & I.T. CONSULTANTS.

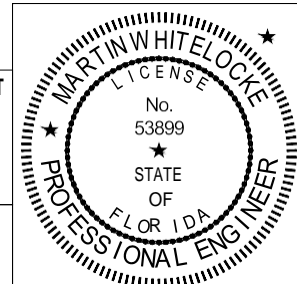
1 ELECTRICAL GROUND FLOOR PLAN  
3/16" = 1'-0"

Martin Whitelocke  
P.E.  
53899

Digitally signed by Martin Whitelocke  
P.E. 53899  
Date: 2019.06.25 11:12:13 -04'00'

NO CHANGES SHALL BE MADE TO THESE PLANS WITHOUT PRIOR APPROVAL FROM THE ENGINEER OF RECORD. ALL CHANGES SHALL BE SUBMITTED FOR REVIEW PRIOR TO INSTALLATION. NOT FOR BID UNTIL PERMIT HAS BEEN ISSUED.

This item has been electronically signed and sealed by Martin Whitelocke PE using a digital signature and date. Printed copies of this document are not considered signed and sealed and the signature must be verified on any electronic copies



**Associated Professional Design**  
Consulting Engineers

500 NE SPANISH RIVER BLVD., SUITE 203, BOCA RATON, FLORIDA 33431  
PHONE: 561.419.8977; INFO@APD-ENGINEERING.COM  
MARTIN WHITELOCKE, P.E. FLORIDA LICENSE No. 53899

CA. LIC. No. 31328

207 SIXTH STREET  
WEST PALM BEACH, FLORIDA 33401  
ph. 561.684.6844 gliddenspina.com  
FL LIC. #AAS0002399

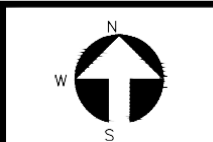


NEW CONSTRUCTION FOR:  
LOVE STREET L1.2  
JUPITER INLET VILLAGE  
Jupiter, Florida

THESE DRAWINGS ARE FOR THE EXCLUSIVE USE OF GLIDDEN SPINA + PARTNERS, INC. AND MAY NOT BE DUPLICATED, REPRODUCED OR USED IN ANY MANNER WITHOUT THE EXPRESS WRITTEN CONSENT OF GLIDDEN SPINA + PARTNERS, INC. ALL RIGHTS RESERVED.

Revisions:	
1. T.I. BUILD-OUT	6/21/19

Project no:	18010
Date:	10.09.18
Drawn by:	SG/DL/AM



E1.1

ELECTRICAL GROUND FLOOR PLAN